



MP-327 and MP-332

The MP-327 and MP-332 are 3 cylinder, naturally aspirated, diesel engine developing max hp at 3,000 rpm (Recreational Craft Directive emission compliant).

The engine is supplied complete with a heat exchanger and header tank, water cooled exhaust manifold, fresh and sea water pumps, stainless injection bend, mechanical fuel lift pump, fuel and oil filters, heavy weight flywheel for smooth running at low rpm, flywheel housing, 12 volt starter and 50 amp battery charging alternator, shutdown solenoid, deluxe control panel with key start switch and push button stop, Rev counter, temp gauge, oil pressure gauge, warning lights and alarm buzzer for low readings. It comes complete with 'easi-plug' fitting to the engine harness on a 5M loom.

Gearbox with nominal 2:1 reduction, heavy duty engine feet with flexible mountings, 'Morse' type end fittings for speed and gear control and operator's manual. Packed on pallet with a 1 year warranty.

Standard features

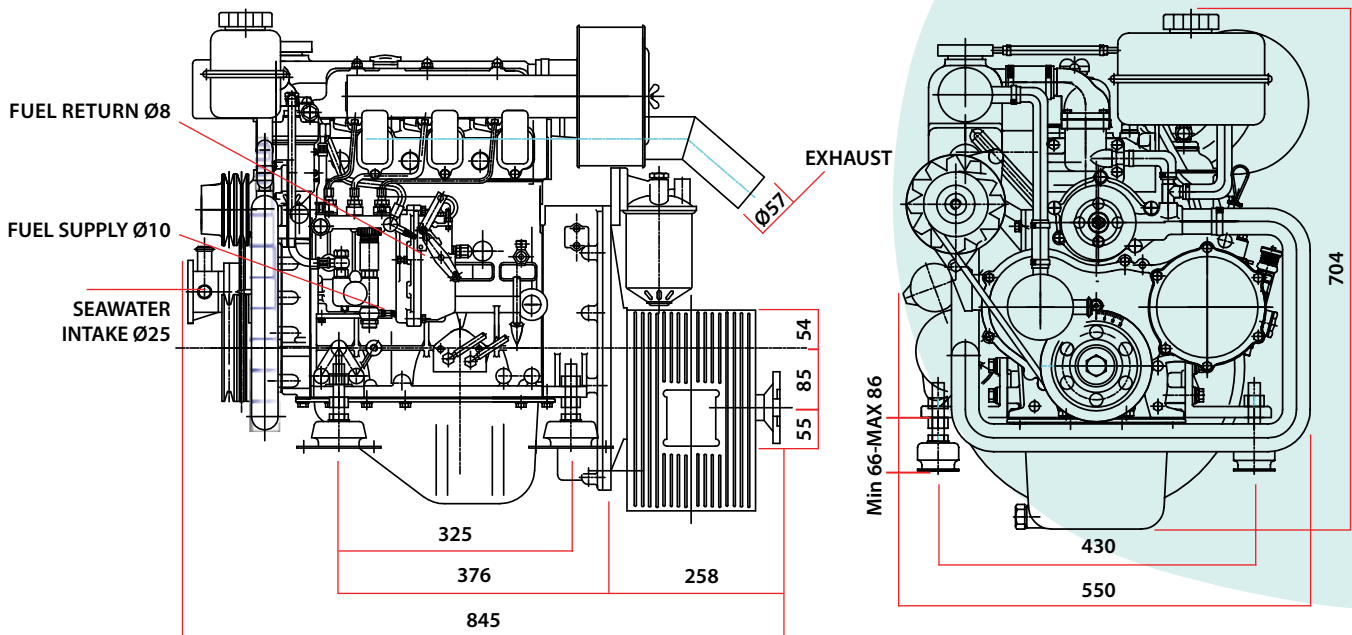
- Quality engines design for the harsh marine environment
- Reliable heat exchanger cooled, naturally aspirated, indirect injection diesel engine
- Designed for both leisure and commercial applications
- Cast iron cylinder head and block
- Excellent fuel consumption
- PRM type gearboxes. Output rotation is clockwise in ahead viewed from gearbox end
- Hydraulic gearbox available as an option
- Spare filters and belt
- Flexible engine mounts
- CE and RCD compliant

Model	MP-327	MP-332
Type	Vertical, water cooling, 4 stroke direct-injection combustion chamber	
No. of cylinders	3	
Displacement	1.357	1.553
Rated Power	27hp (20kw)	32hp (23.5kw)
Rated RPM	3,000	
Max Torque (Nm)	72.6	83.5
Rated RPM	1,900	
Exhaust system	Water cooling	
Lubrication method	Pressure and splash	
Fuel	Diesel	
Gearbox type	Mechanical	
Ratio	1.88:1 or 2.74:1	
Net weight (kg)	230	

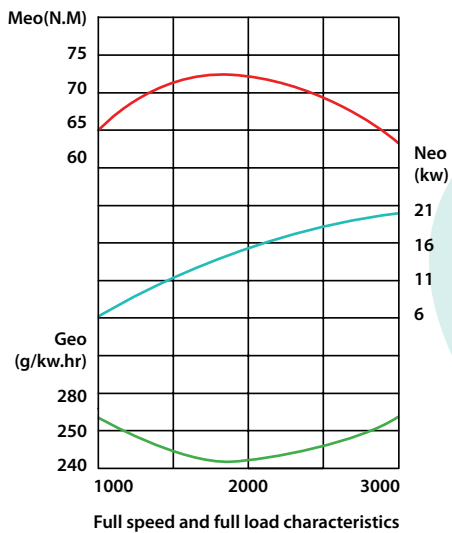




MP-327 and MP-332 technical specifications



MP-327



MP-332

